

Ontario Lacrosse Association Google Mapping Tool

Residence to Boundary

Presented by: Janet Murphy, Mapping Coordinator



Access to OLA Maps

To use the OLA maps, you must have a Gmail address (Google account). You will receive your invitation to view a map via Gmail.

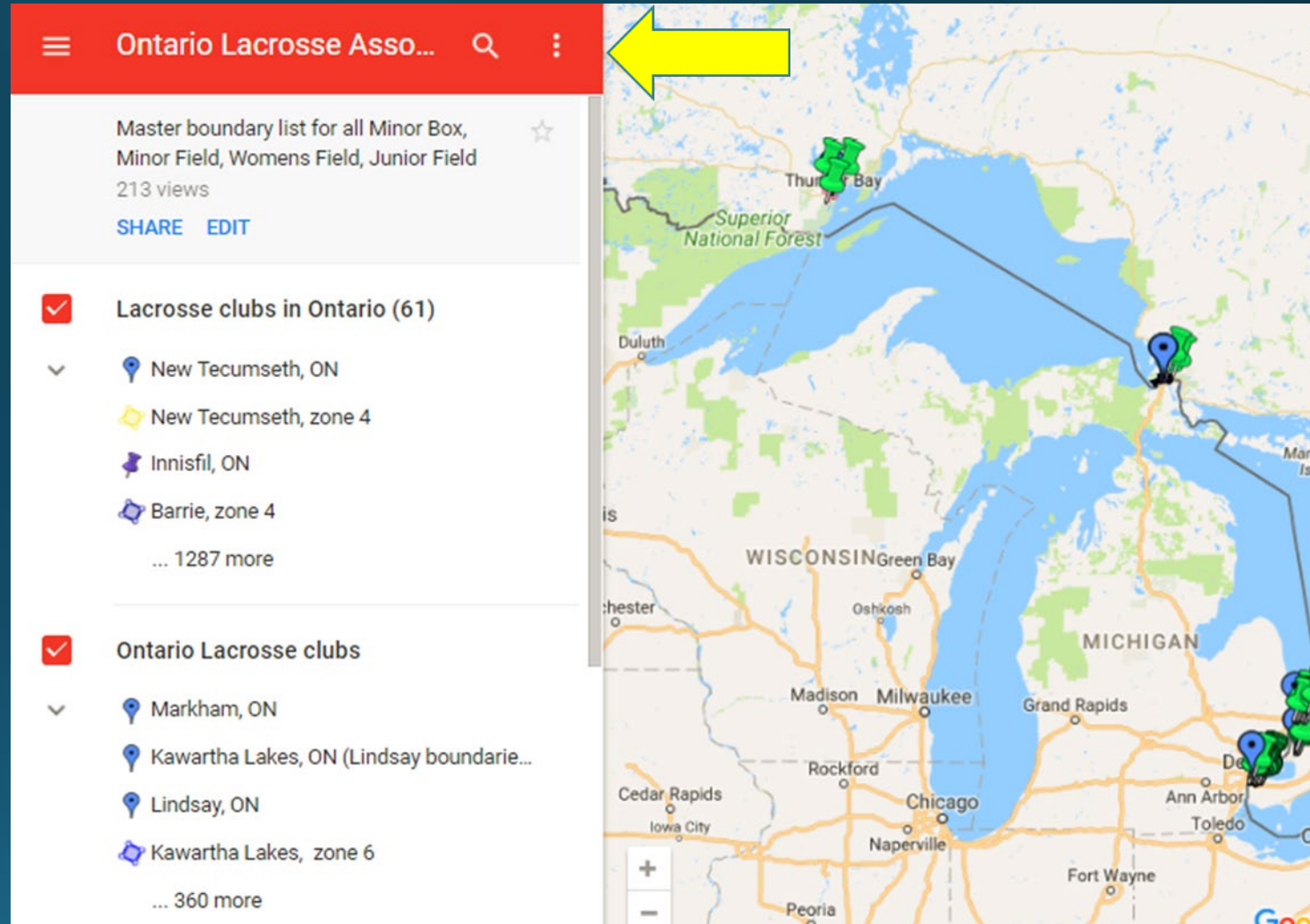
To request a copy of the OLA Boundary maps or Boundary Map instructions please contact Ron MacSpadyen at ron@ontariolacrosse.com

Step One

Open the map.

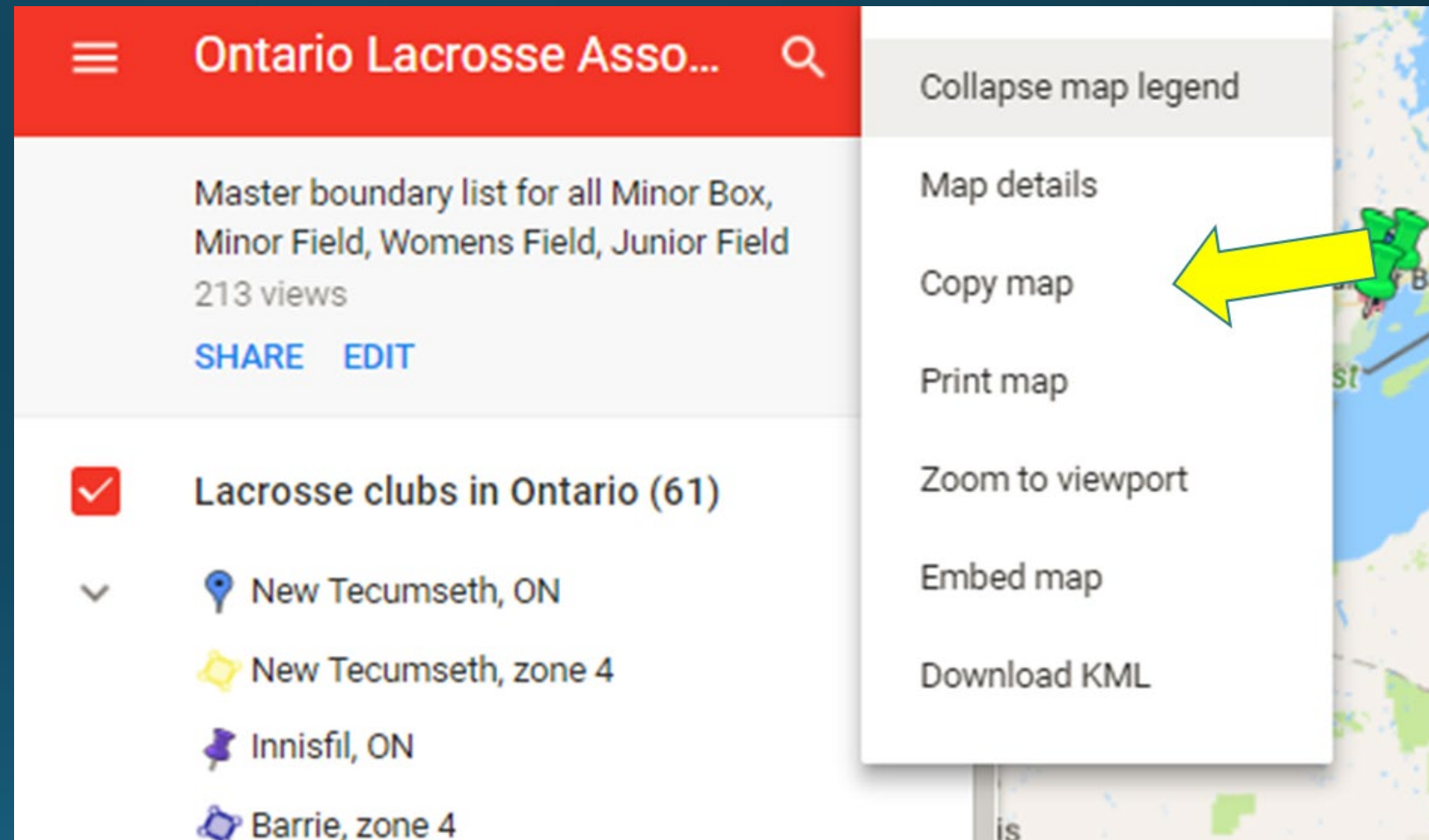
You will see a Google map with a red legend.

At the top right corner of the Menu bar, select the three small dots.



Step Two

You will be given several options: **select 'copy map'**.



The screenshot shows a Google Maps interface. At the top, there is a red header with a hamburger menu icon, the text "Ontario Lacrosse Asso...", and a search icon. Below the header, there is a description: "Master boundary list for all Minor Box, Minor Field, Womens Field, Junior Field" with "213 views" and two buttons: "SHARE" and "EDIT".

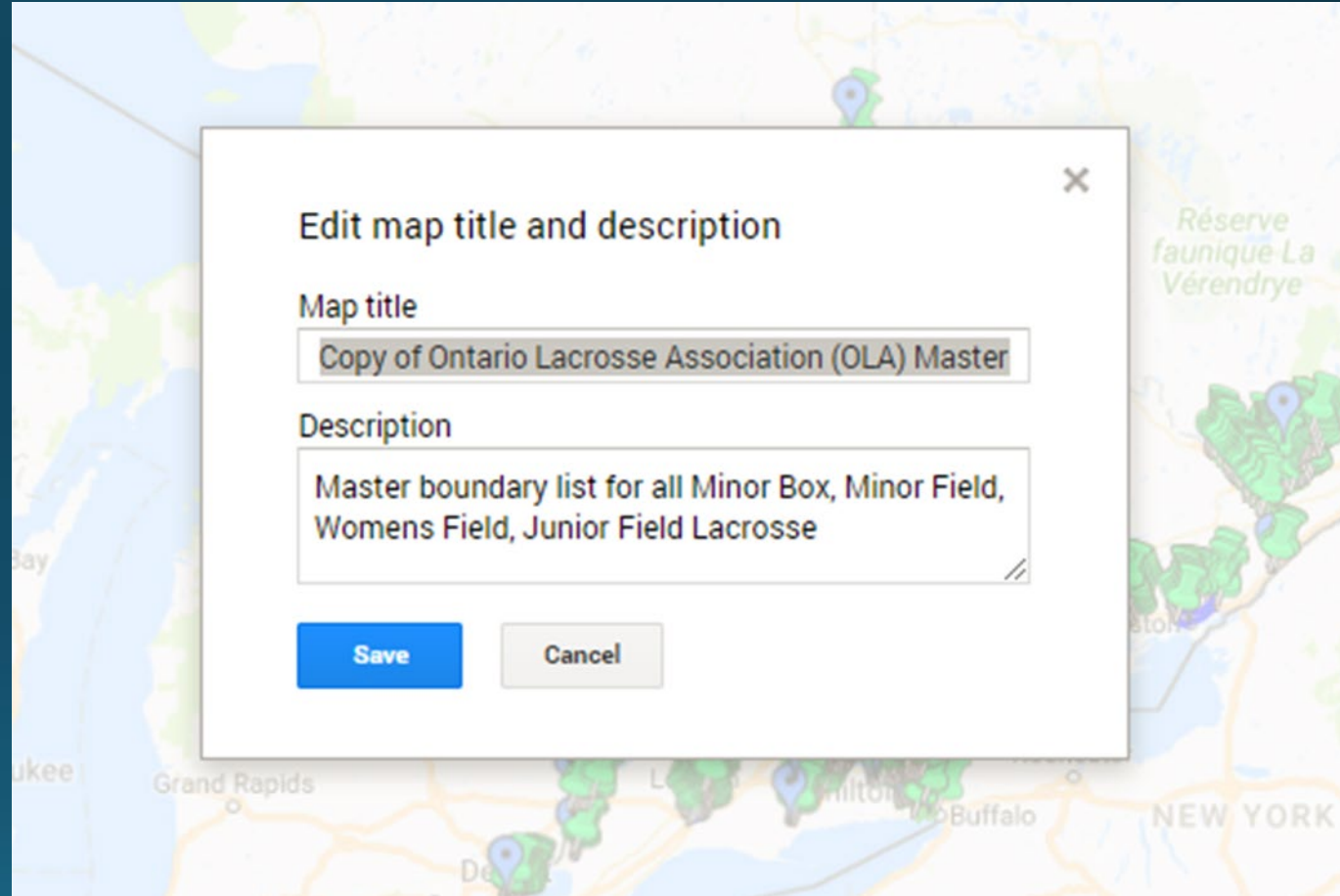
Below this, there is a list of items. The first item is "Lacrosse clubs in Ontario (61)" with a red checkmark icon. Below it, there is a dropdown arrow and a list of locations: "New Tecumseth, ON", "New Tecumseth, zone 4", "Innisfil, ON", and "Barrie, zone 4".

On the right side, a context menu is open, listing several options: "Collapse map legend", "Map details", "Copy map", "Print map", "Zoom to viewport", "Embed map", and "Download KML". A yellow arrow points to the "Copy map" option.

Step Three

Save a copy of the map.

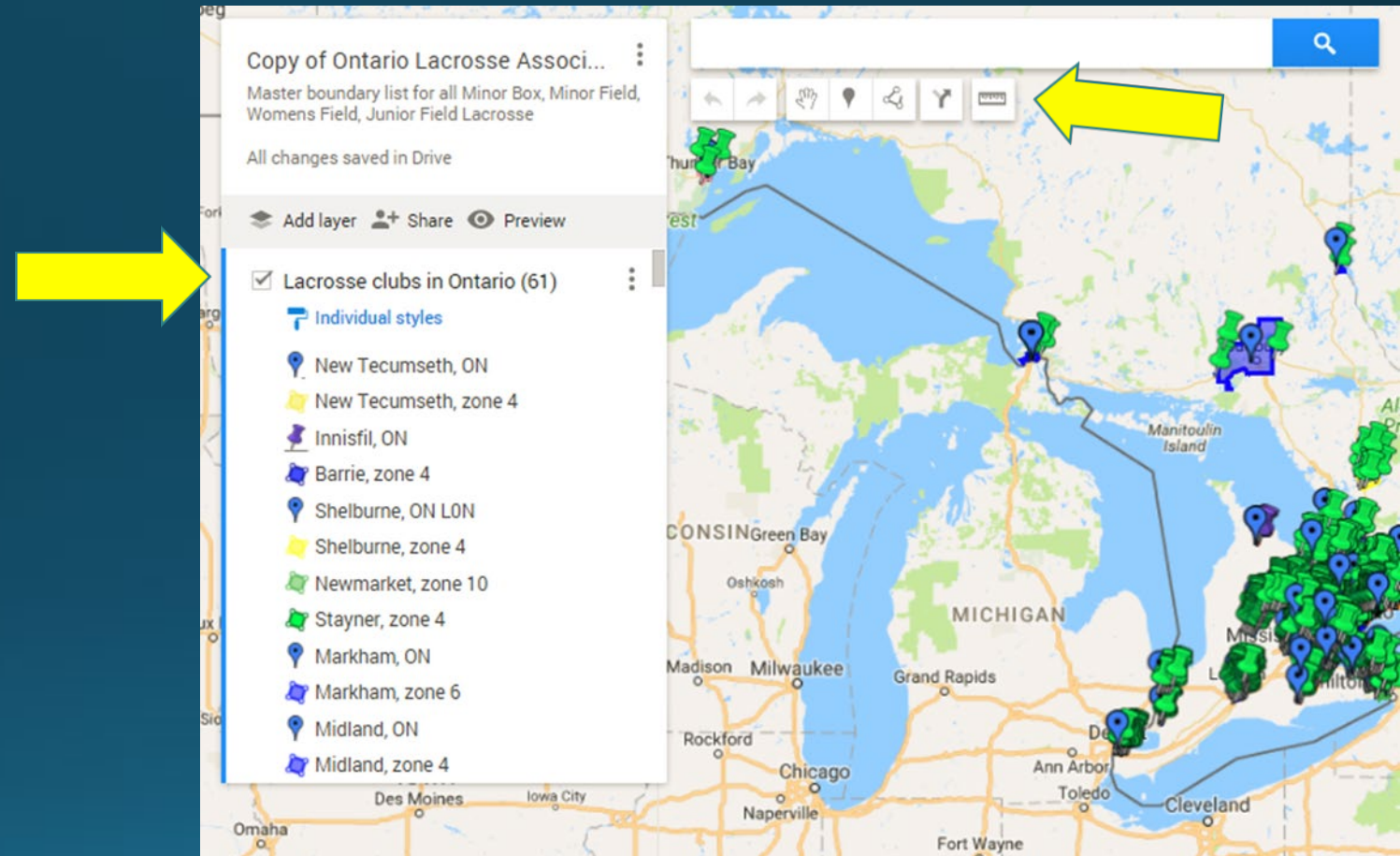
Use **this copy** as your mapping tool.



Step Four

Open the copy and you will see the same map in a different style.

This map has a search bar and toolbar in the top center. Your legend is on the left.

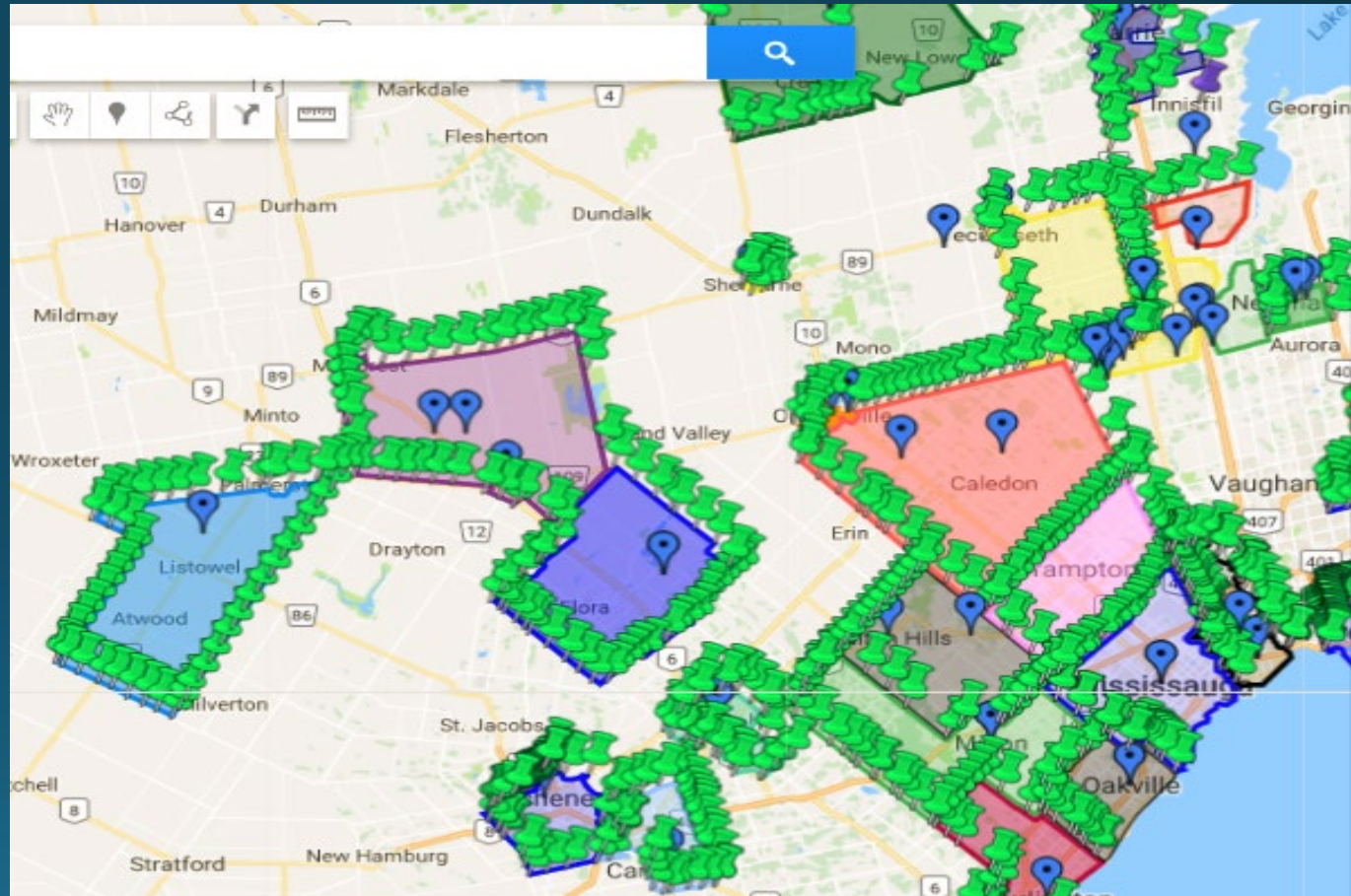


How to Use the Map

Each club's boundaries are shown in the map.

Green colored pins have been placed at the roads that intersect the boundaries for each club.

When measuring the distance from the address to the association boundaries, you will be using these numbered pins.

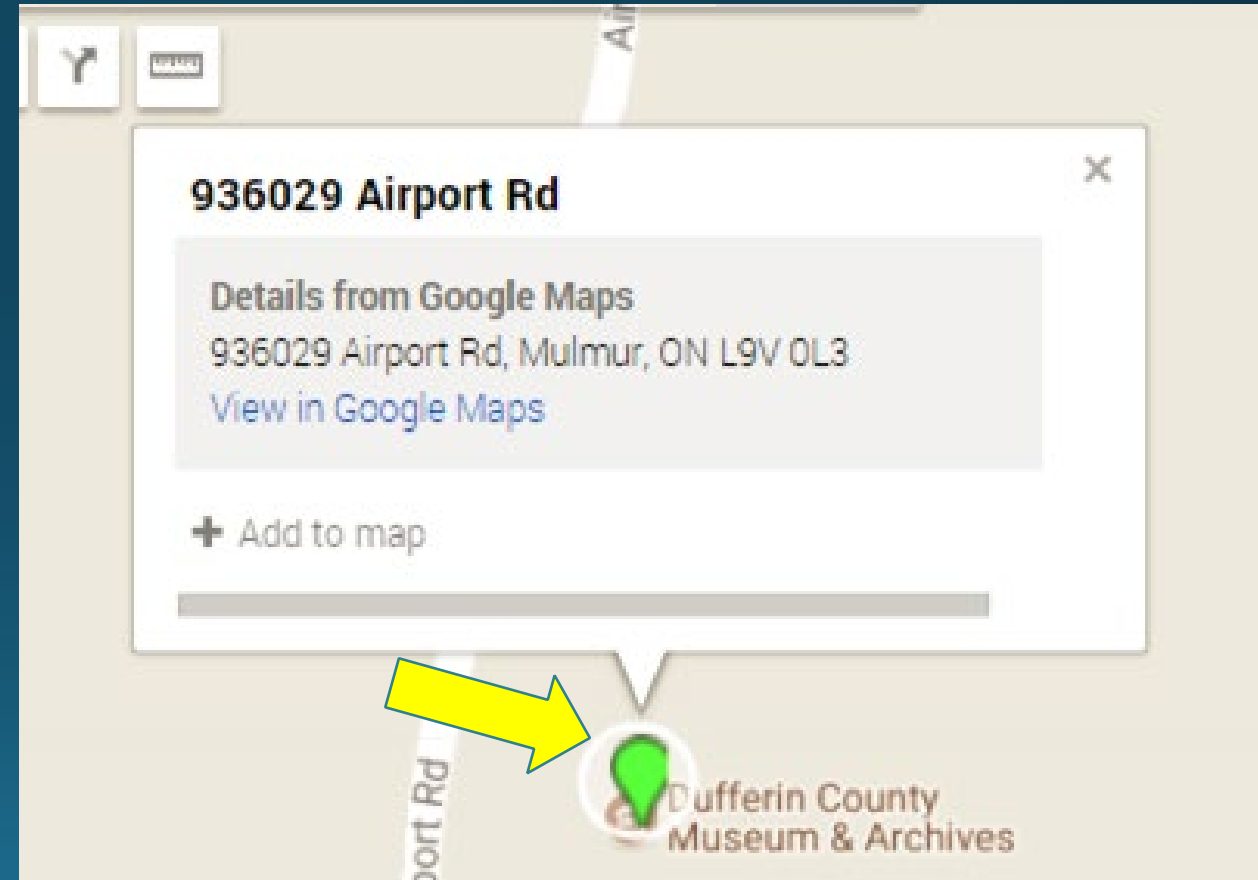


Step One

Enter the primary residential address in the search bar. Select the address, being sure to check postal code etc.

A green icon will appear with the address plotted on the map.

To verify the address, select 'View in Google maps'. A second tab will open and allow you to ensure the address is accurate.



Why verify? Where's Waldo?



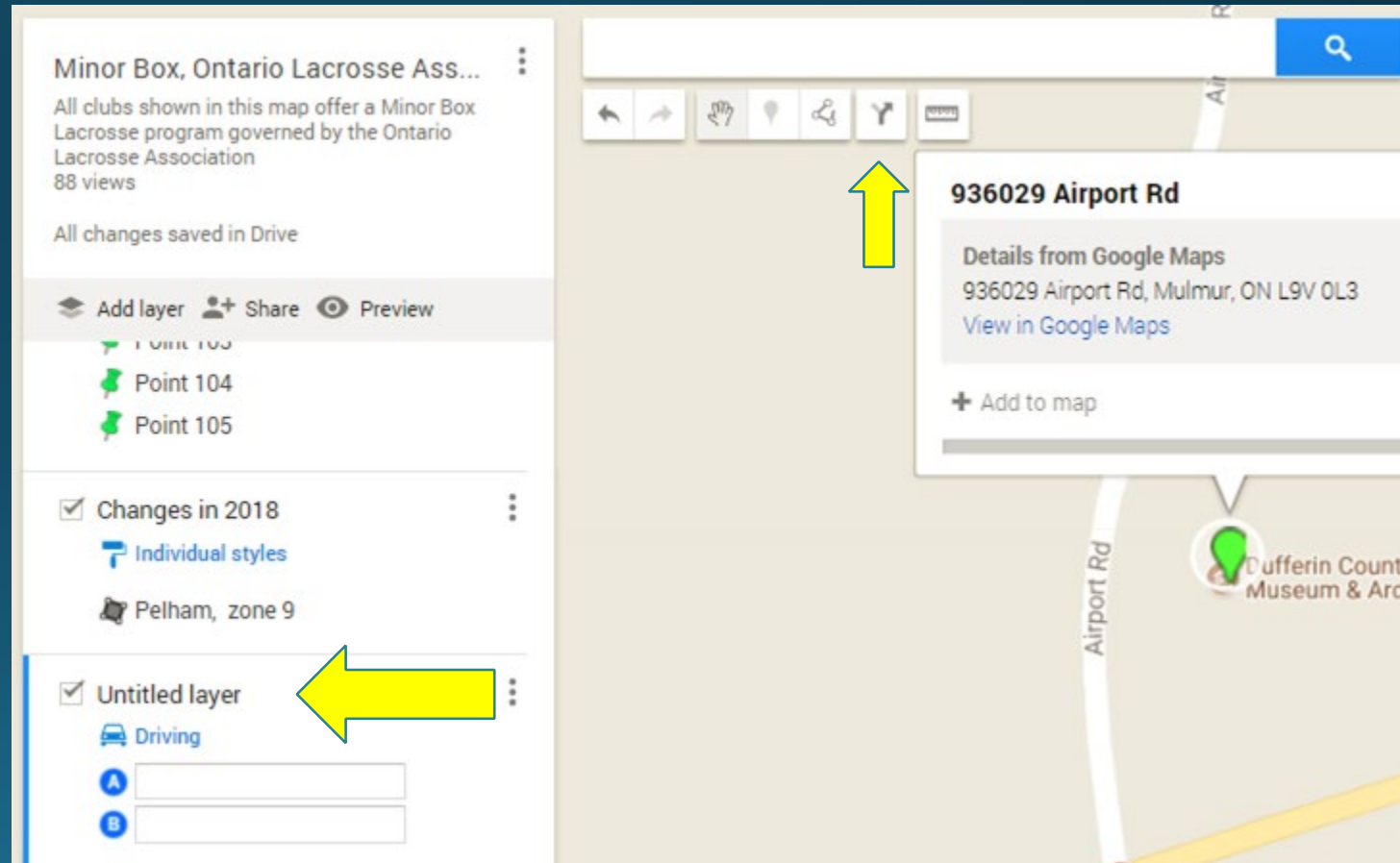
- Using mailbox addresses in different cities/towns, or mailing address instead of residential address
- Addresses in the middle of a cow pasture/ vacant land
- Using commercial addresses as residential addresses
- Claiming other family member addresses as their own residential address
- Using an address they are planning on moving to
- Creating fake addresses and posting them on Google map

Step Two

Below the search bar you will see a menu with tools.

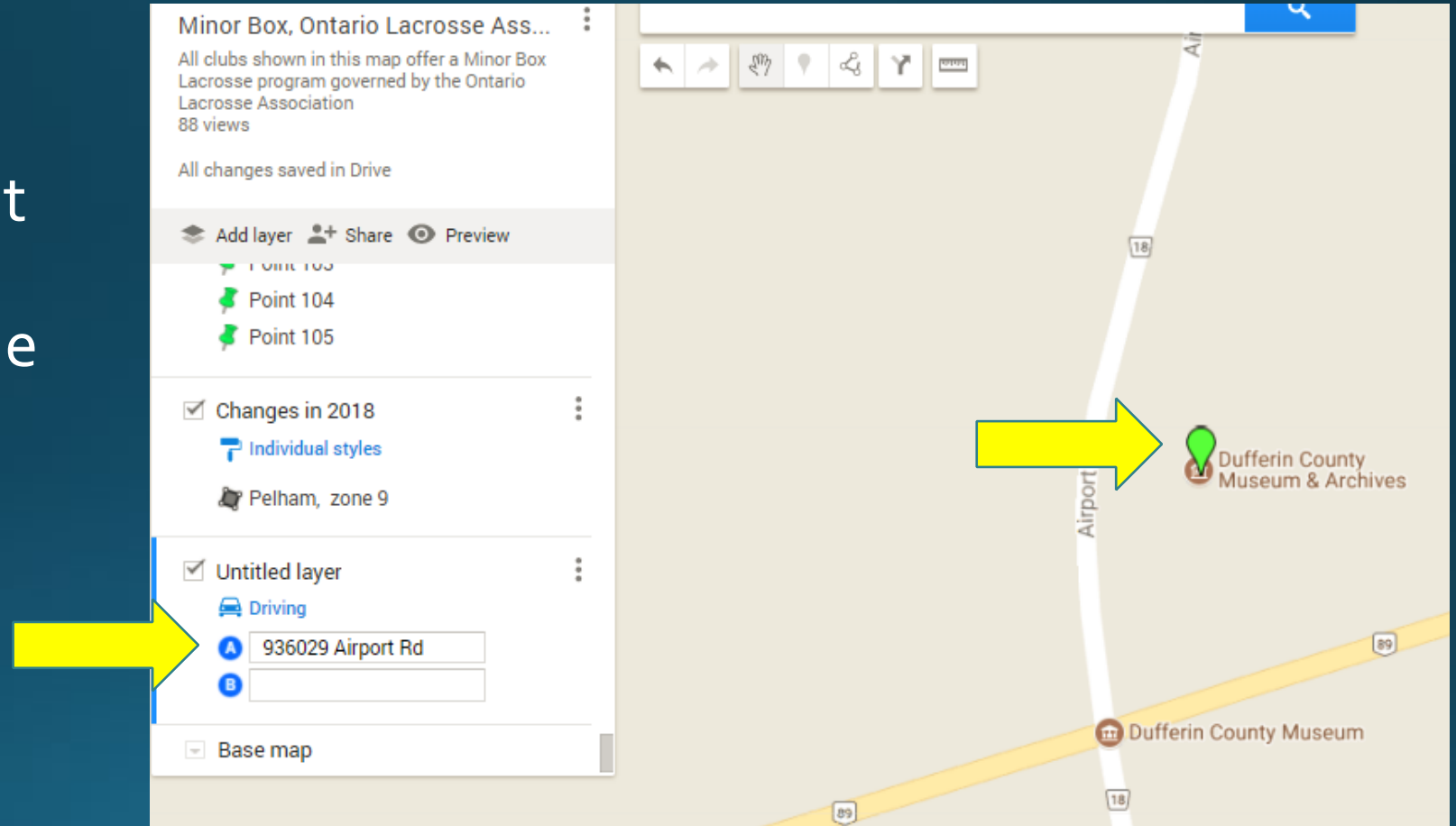
Select:  'add directions'.

A small box will open on the bottom left of the screen below the legend, labeled 'Untitled layer'...



Step Three

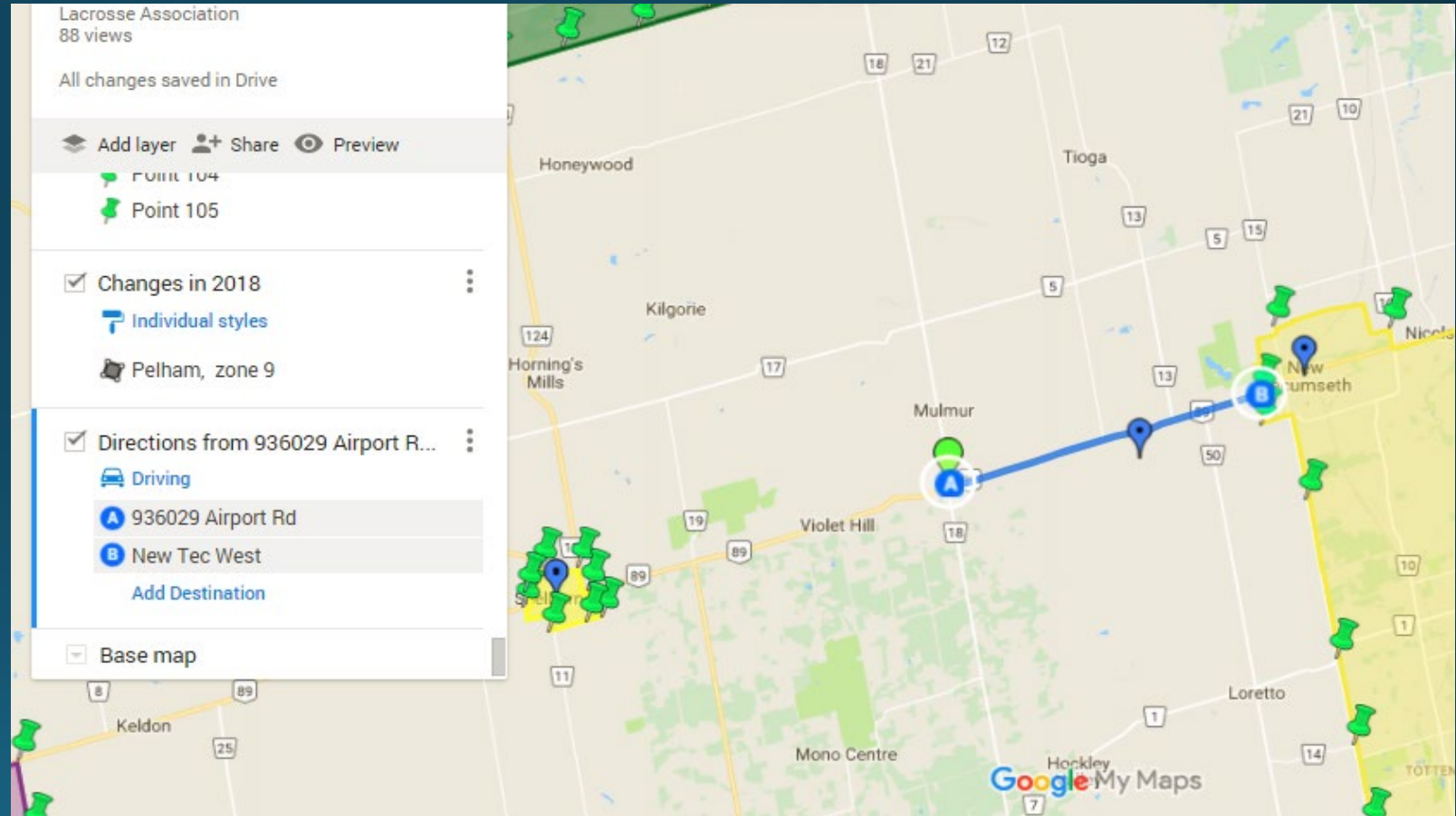
Select the green icon that plots your address; it will insert the address into the untitled layer.



Step Four

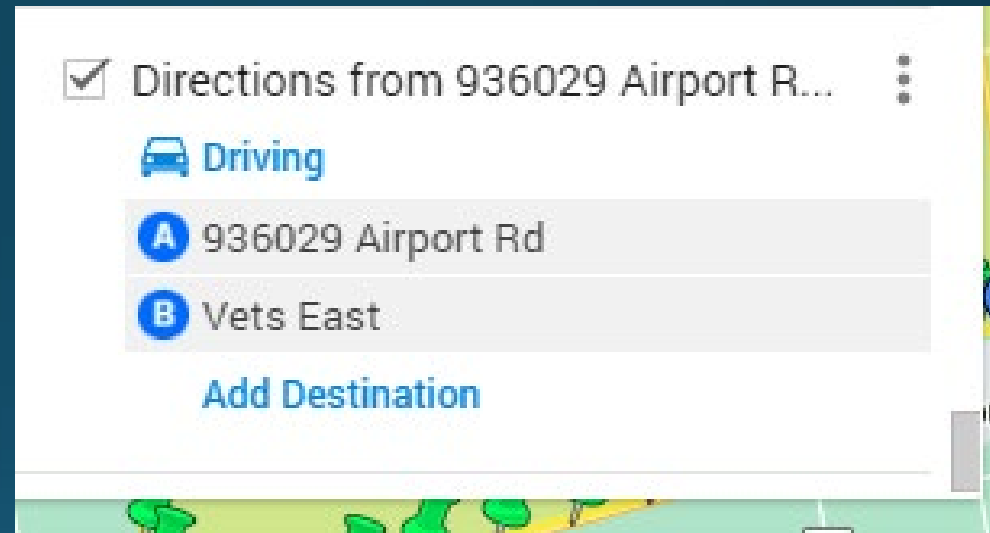
Expand the map to see the associations you need to measure.

Select the pin that best suits the **well-travelled route** from the address to the club.



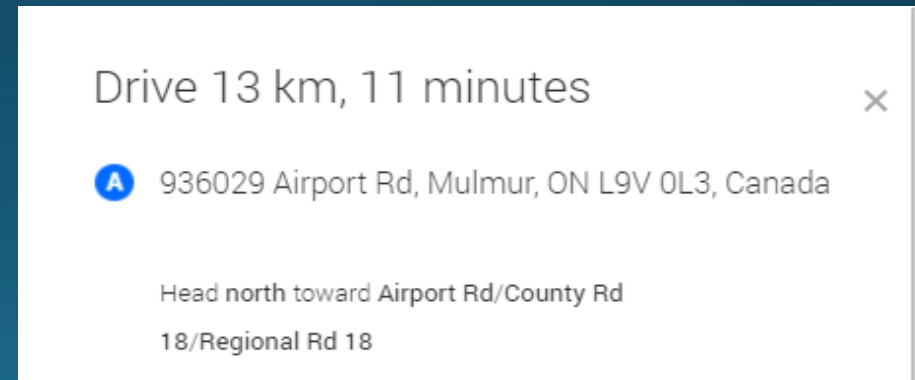
Step Five

Your 'Untitled layer' will now change its title to 'Directions from address'... there are three small dots to the right of this new title, select the dots.



Step Six

Select “**Step-by-step directions**”. Google Maps will provide the rounded measurement.



Step Seven

To measure to another pin close the top box showing the directions.

Drive 13 km, 11 minutes ×

A 936029 Airport Rd, Mulmur, ON L9V 0L3, Canada

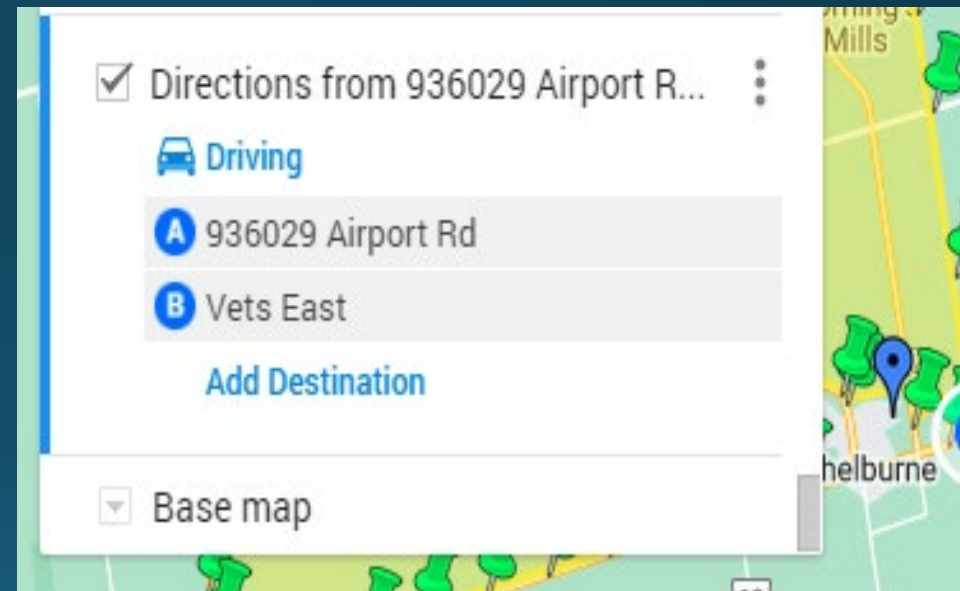
Head north toward Airport Rd/County Rd
18/Regional Rd 18

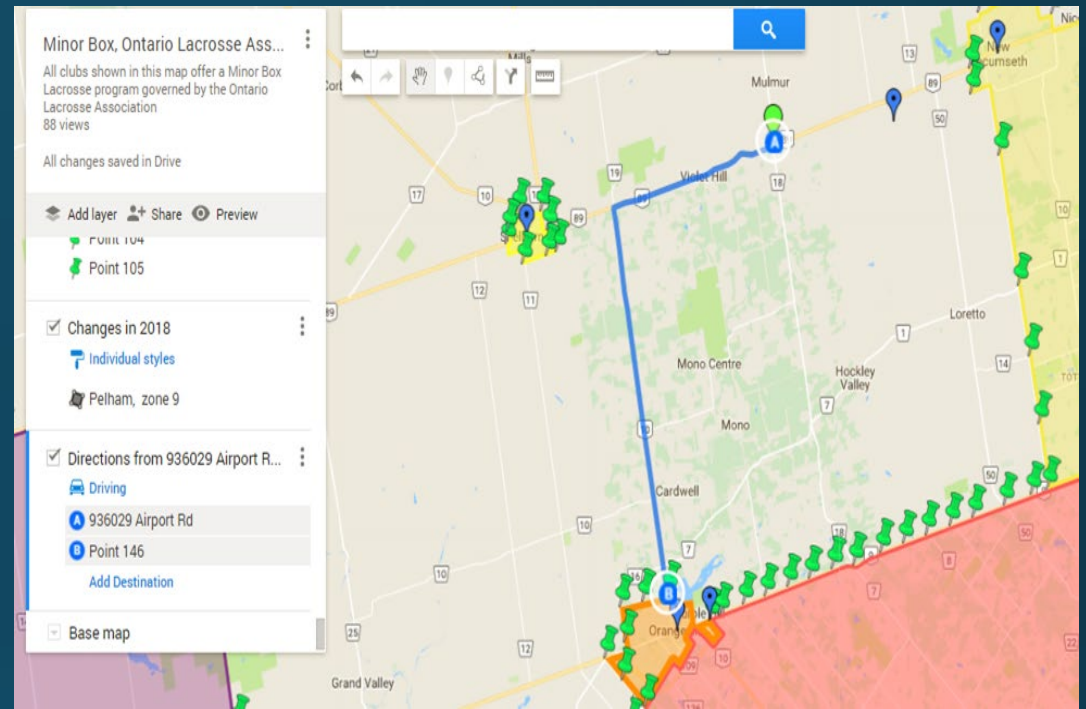
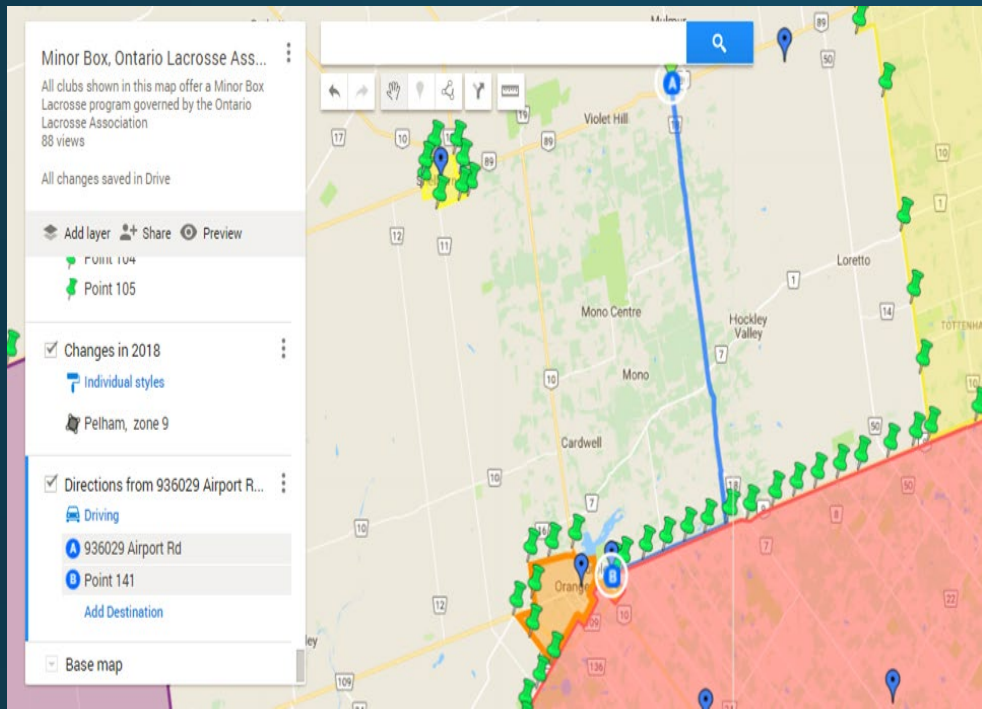


Step Eight

Return to the directions from address box and delete the point from the lower box B (point 541 in example). Hover over the point in box B, an 'x' will appear, click on 'x' to delete.

Select your next pin.





If the route needs to be altered (e.g., toll roads), you can hover your mouse and drag the route in the direction needed.

Be reasonable in altering your route. Remember to choose the shortest route, most likely travelled.

Tips

Tip: Do not delete the address you are measuring in Box A. Simply delete the point from box B and continue selecting points.

Note: Each time you complete a measurement, it adds a layer to the map. Remember to delete the layers you create. If you create too many layers, it can cause the map to freeze. If your map stops working, the first thing to check is how many layers you have created.

Map Access Summary

- To access maps later, google 'My Maps'.
- Sign-in to your Google Account.
- You will see the maps you have copied as well as maps shared with you.
- Note: Please direct all questions regarding mapping to Ron MacSpadyen (ron@ontariolacrosse.com)

